

## MEET THE SPEAKERS



**Sabah Akmal, LCSW** is a Pediatric Clinical Social Worker at the David Geffen School of Medicine at UCLA. Sabah received her MSW from UCLA and has worked as an oncology social worker. She works closely with pediatric pulmonology/cystic fibrosis, endocrinology, and cardiology patients and their families at UCLA Mattel Children's Hospital.



**Juan Carlos "Chuck" Alejos, MD** is a Pediatric Cardiologist in Los Angeles. He received his medical degree from the University of Michigan Medical School and has been in practice for more than 20 years. He is currently the Director of the Pediatric Heart Transplant/Heart Failure Program at Mattel Children's Hospital, which has performed nearly 400 pediatric heart transplants - among the largest programs in the nation. He also is the Medical Director of the Pediatric Pulmonary Hypertension Program at Mattel.



**Anjan "AJ" Batra, MD, MBA, FHRS** (aka Pongo) is a UC Irvine Health Pediatric Cardiologist who specializes in electrophysiology, arrhythmia management and device implantation. He is vice chair of the UC Irvine School of Medicine's Department of Pediatrics and chief of its Division of Pediatric Cardiology. He also is medical director of electrophysiology at CHOC Children's Heart Institute in Orange. Batra earned his medical degree at Ohio State University, and completed his internship, residency and fellowship at Children's Hospital of Los Angeles. He is certified by the American Board of Pediatrics in general pediatrics and pediatric cardiology. He also is certified by the Heart

Rhythm Society for pacemaker and implantable cardioverter defibrillator management. Batra's research and scientific findings are reflected in more than 60 publications in prestigious national journals and text books. He is an internationally recognized lecturer who is known for his work on the prevention of sudden cardiac arrest in children and adolescents.

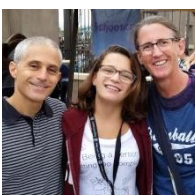


**Mary M. Canobbio, RN, MN, MPH, FAAN, FAHA** received a Bachelor's in Nursing from California State University, Los Angeles and holds a Master's in Nursing and Public Health from UCLA. She is a Fellow of The American Academy of Nursing and the American Heart Association. Mary has been associated with the Ahmanson/UCLA Adult Congenital Heart Program since its beginning serving initially as the Clinical Nurse Specialist. Currently she coordinates their high risk pregnancy program and is the program coordinator for the UCLA Adolescent Transitional Cardiac Care program in the Division of Pediatric Cardiology. Mary holds a faculty appointment in the UCLA

School of Nursing. Her research program has focused reproductive outcomes in females born with congenital heart disease (CHD) focusing specifically on pregnancy outcomes after complex CHD.



**Jon Detterich, MD** (aka Salty Dawg) is a Pediatric Cardiologist at Children's Hospital Los Angeles, specializing in advanced imaging. He does research in the area of vascular dysregulation and red blood cell mechanics. He loves most things that get him in the water, especially when it involves his wife and three kids.



**Tracey Fish** is a CHD mom, and has this to say about camp: "My daughter has been going to Camp del Corazon for nine years. Even as a teenager, her week at CDC is the highlight of her year. I am so grateful to CDC for everything that camp has provided to Emma. She has gained a sense of independence and so much confidence through her time at camp. Emma has also made many friends through camp, this has helped her to build a community of friends with CHDs."



**Julie Frumin, LMFT** is a Licensed Marriage and Family Therapist, with a private practice in Westlake Village, where she specializes in teens and parenting. She is a trainer at Kaiser Permanente, and has led the group, "Healthier Living with Chronic Conditions" since 2014. She is an adjunct professor at Cal Lutheran University, teaching the course "The Psychology of Sex and Gender." She received her Masters at Pepperdine University and has a passion for working to help families create solutions that are bigger than their problems.



**Addison Gearhart, MD** is a first year resident at the UCI-CHOC Pediatric Residency Program. She earned her bachelor's degree at Colgate University and medical license at George Washington University. She is interested in pursuing a career in pediatric cardiology. Currently her research interests include behavioral determinants of meeting exercise recommendations in patients with congenital cardiac disease.



**David Highfill, LCSW, MSW** is a Licensed Clinical Social Worker with over 20 years of experience working with a variety of populations across multiple settings including: organ transplant (heart, lung, liver), HIV/AIDS, LGBTQ, renal disease, dialysis, the Veteran's Administration, Home Health, Hospice, senior care, PTSD, substance abuse, grief and loss, and relationship issues. David is currently working with the Ahmanson/UCLA Adult Congenital Heart Disease Center while maintaining a private therapy practice and supervising Master's level social workers as they move toward licensure. David is uniquely familiar with many of these issues as he is also a CHD patient who underwent heart transplantation at UCLA in 2012.



**Melina Jampolis, MD** is a graduate of Tufts University and Tufts School of Medicine, she completed her residency in Internal Medicine at Santa Clara Valley Medical Center, a Stanford University teaching hospital. In 2005, Dr. Melina hosted a program on the Discovery Network's FIT TV titled "Fit TV's Diet Doctor" and served as the diet and fitness expert for CNNHealth.com from 2008-2014 and remains a consultant. In addition to having written several books (her latest book, *The Doctor on Demand Diet*, was released in November 2015), she is a frequent guest on popular TV shows and networks including Live with Kelly, The Doctors, Dr. Oz. show, CNN, Hallmark

Home & Family, and Fox News and Business Network. She has also appeared on the Today show, Access Hollywood Live, The Talk, and numerous local television and radio stations including ABC, NBC, FOX, KGO radio and KRON-4 news.



**Samantha Lappin** (aka Glinda) is the Assistant Programs Director at Camp del Corazon. She's been working with Camp for four years and heads up all camper family communications. So if you've applied to camp, you've talked to Glinda!



**Frederic Leong, MD** (aka Burger King) earned his BA in Biology and his Doctorate of Medicine at the University of Missouri and completed his Pediatric Residency, Chief Residency and Pediatric Cardiology Fellowship programs at UCLA Medical Center. He is a volunteer assistant professor of Pediatrics at the UCLA David Geffen School of Medicine. He enjoys teaching and is an instructor of Pediatric Cardiology at the Ventura County Medical Center Family Practice Residency program. Dr. Leong has over 15 years of pediatric cardiology clinical experience and he is certified by the American Board of Pediatrics and Board of Pediatric Cardiology. Each summer he enjoys

volunteering with Camp Del Corazon.



**Daniel Levi, MD** (aka Heavy D) is an Interventional Pediatric Cardiologist who has served on the UCLA School of Medicine faculty since 2003. His primary clinical role involves the use of catheters and devices to help children with congenital heart disease. He is internationally known for his laboratory and clinical research, and travels to Peru yearly to perform procedures on children with congenital heart disease. He also volunteers as a camp doctor at Camp del Corazon.



**Jennifer Page** is probably best known to you as *Mini Darth Vader's mom*! Jennifer is a Children's Hospital LA Trustee, a passionate leader with Children's Hospital Association and several health related charities, and dedicates countless hours giving back to her community. She is forever grateful for the organizations that have helped her son Max flourish despite having CHD. Jennifer has been seen numerous times on the *Today Show*, *CNN*, *Access Hollywood*, *Extra*, *Inside Edition*, *Fox News*, and more. She is a special contributor to *Ad America*, *CNN*, *Ladies Home Journal*, *Cincinnati Children's Hospital Heart Institute*, and has appeared in *In Touch* magazine.

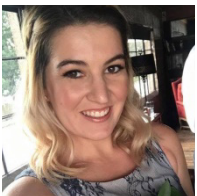
She speaks nationally about her family's journey of transformation. She is passionate about helping others find their way to make a difference in our healthcare system.



**Gregory Perens, MD** (aka Bones) is the Associate Director of Pediatric Post-Heart Transplant at UCLA. He has been at UCLA for 14 years as part of the transplant team and general Pediatric Cardiology. He has been to Camp five times as both a Counselor and as Camp Doctor.



**Leigh Reardon, MD** (aka Morpheus) is an Assistant Professor of Medicine and Pediatrics at UCLA where he is invested in adult congenital cardiology with a focus in advanced heart failure treatment and transitional care. He serves as the Director of the Pediatric Mechanical Circulatory Support and of the Transitional Cardiac Care Program for Young Adults with Congenital Heart Disease. He was the recipient of the International Society of Heart and Lung Transplant (ISHLT)/O.H. Frasier Award for Translational Research in Mechanical Circulatory Support and was honored by the David Geffen School of Medicine with the "Teaching Humanistic Care at the Bedside Award."



**Amanda Remos** (aka Duchess) has been volunteering in the camp community for over 10 years. She is an experienced camp counselor, camp leadership member, and mentor in the PACE program. Six months post-surgery from of a pulmonary valve replacement, she has been managing the ins and outs of being an adult with CHD.



**Kevin Shannon, MD** (aka Big Kahuna) is a Pediatric Cardiologist and Director of Pediatric Electrophysiology at Mattel Children's Hospital at UCLA. He is also a Professor at the David Geffen School of Medicine at UCLA, and wears excellent ties. But wait, there's more! Dr. Shannon is Camp del Corazon's Co-Founder, President, and Medical Director, and an all-around swell guy. Camp wouldn't be possible without him. Seriously, he's the best. And if you think this bio is too boastful, it's because Dr. Shannon didn't write it because he's busy mending hearts...but he can't stop us from singing his praises!



**Kalyanam Shivkumar, MD, PhD** received his medical degree from the University of Madras, India in 1991 and his PhD from UCLA in 2000. He completed his cardiology fellowship training at the UCLA, and upon completion of his training joined the faculty at University of Iowa, where he also served as the Associate Director of Cardiac Electrophysiology. In 2002, he was recruited back to UCLA to direct the newly created UCLA Cardiac Arrhythmia Center at the David Geffen School of Medicine at UCLA. His field of specialization is interventional cardiac electrophysiology and he heads a group at UCLA that is involved in developing innovative techniques for the non-pharmacological management of cardiac arrhythmias. He is currently Professor of Medicine and holds a joint appointment in the Department of Radiology at UCLA. Dr. Shivkumar is certified by the American Board of Internal Medicine in the subspecialties of Cardiovascular Disease and Clinical Cardiac Electrophysiology. He holds memberships in several professional organizations, including the American Heart Association, American College of Cardiology and the Heart Rhythm Society.



**Michael Strane** (aka Geo) had a heart transplant in 2008 after having a widowmaker heart attack while mountain biking. He was rock climbing again within 90 days of his transplant and has since gotten back to mountain biking. He works full time as an engineering geologist and has been volunteering at Camp Del Corazon as an activities counselor for 5 years.



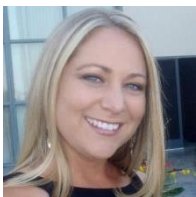
**Sylvia Villaseñor, LCSW** is a Pediatric Clinical Social Worker at the UCLA Mattel Children's Hospital. Sylvia received her MSW from UCLA School of Public Affairs in 2006, and has been working with children and families at UCLA since 2006. Sylvia has the honor of working with Pediatric Cardiology, Endocrinology, and Craniofacial patients and their families.



**Chris Waller** was born with congenital heart defects including ventricular septal defect, a bicuspid aortic valve, and coarctation of the aorta. At 15, after being the youngest gymnast to compete at the Senior Nationals, Chris underwent open heart surgery to repair his coarctation. While his aortic valve had a 10% regurgitation rate, doctor's chose to not repair the valve, and he went on to compete at the highest level of competition, with the defect. At 38, Chris underwent a second surgery to replace his aortic valve and reconstruct his descending aorta. 4x UCLA All-American, 3x NCAA Champion, 4x National Champion, and U.S. Olympian, Chris Waller is in his 16th season as an associate head coach for the UCLA women's gymnastics team and sixth as associate head coach. In 1992, Chris placed 5th at the Olympic Games on Pommel Horse, just .1 away from gold. Chris is a member of USA Gymnastics Hall of Fame. He and his wife Cindy are owners of Wallers' GymJam Academy, which has trained countless state, regional, and national champions along with many NCAA full scholarship gymnasts. The GymJam Foundation raises funds for gymnasts and Camp del Corazon, to which the foundation has donated over \$30,000.



**Colby and Carrie Weeks** are part of a family with four members that suffer from congenital heart defects. First, Colby's brother, Randy, born in 1962, was diagnosed with heart defects and tragically passed away at 5 months of age. Then Colby was born in 1966 with Tetralogy of Fallot. He has two sisters that did not have heart defects, but one of their daughters, Rachael, was born with Tetralogy of Fallot with pulmonary atresia. Carrie and Colby were told that they had an 8%-15% chance of passing along this defect to their children, so they took the risk. Garrett, the first son, was not born with heart defects, however, their second son, Tanner, was diagnosed with Tetralogy of Fallot with pulmonary atresia in utero. Colby and Tanner, who are both treated by Dr. Kevin Shannon and Dr. Jamil Aboulhosen from UCLA, are currently thriving. They have both received a pulmonary melody valve at UCLA and, in addition, Colby has a defibrillating pacemaker. He works out regularly and is in great health! After receiving the new melody valve at age 12, Tanner became a much stronger athlete. He hopes to make the high school soccer team and/or the track team as a sprinter!



**Katrina Whalen, RN, MSN, ACNP** (aka Kit Kat) is a Nurse Practitioner at the Ronald Reagan UCLA Medical Center. She has worked for many years in cardiac surgery in the Cardiothoracic ICU and the Cardiomyopathy Center and now recently she has made a transition and is working in the UCLA Adult Congenital Heart Disease Center. Katrina started with Camp del Corazon in 2007 as a Med Nurse and now has been the camp Nursing Director since 2014.



**Elizabeth Wright** (aka Bayzil) was born with transposition of the great arteries. She has been a cabin counselor at Camp del Corazon since 2003 and even spent a couple years on the leadership staff. She comes back every year because it is such an amazing experience spending five days on the island with these amazing children enjoying camp and just being kids.



**Joseph Wu, MD** (aka Moose) attended medical school at Chicago Medical School, and did his Internal Medicine training at Loyola University Medical Center. He then did his Cardiology Fellowship at Loma Linda University Medical Center. He completed his Clinical Cardiology Electrophysiology Fellowship at Kaiser Permanente Los Angeles and did an advanced VT Fellowship at UCLA. He currently practices at Kaiser Permanente Los Angeles Medical Center specializing in VT ablation and structural Electrophysiology.